

## Douglas

Towering up to 60 metres tall, Douglas is a tree that stands out. The grand expression is preserved in the planks, where the unique grain bears testimony to nature's power and beauty. We source our raw wood mainly from the Black Forest, and only the best of the 80 to 120-year-old trees have what it takes to get through the eye of the needle. It is this careful selection and the extraordinary craftsmanship that place Dinesen Douglas in a class of its own.

Douglas planks create a highly elegant and harmonious expression due to the extraordinary dimensions. An extravagant solution with clear references to the majestic Douglas tree. Choose between Classic and Natural.

### Classic

---

Subtle structure with a classic expression. Harmonious and calm. Fewer knots.

### Natural

---

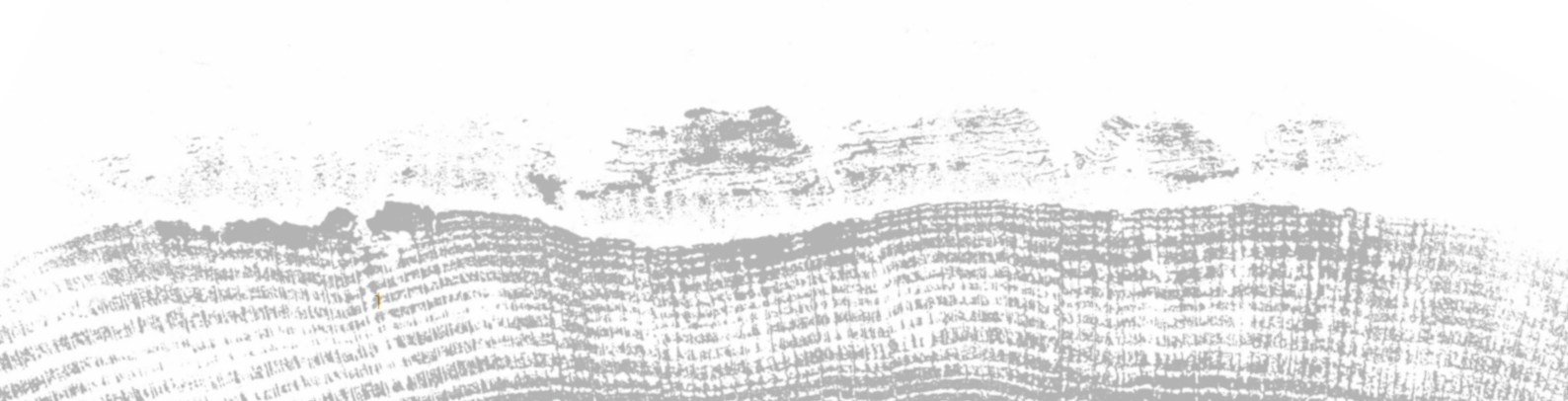
Dynamic structure with a natural expression. Authentic and warm. More knots.

Dinesen Floors a/s  
Klovtoftvej 2, Jels  
6630 Rødding, Denmark

T +45 7455 2140  
F +45 7455 2976  
E [info@dinesen.com](mailto:info@dinesen.com)

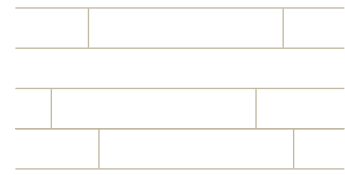
Showroom  
Søtorvet 5  
1371 Copenhagen, Denmark

T +45 3311 2140  
F +45 3316 2141  
E [info@dinesen.com](mailto:info@dinesen.com)



# Douglas

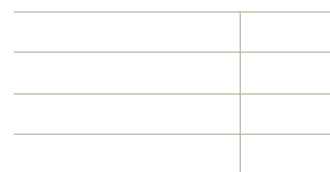
Planks in random lengths are delivered in available lengths. This makes for a fluid transition from one room to the next and a coherent expression that is perfect for many projects. Each plank is made as long as possible, which makes it possible to use a very high proportion of the raw wood.



Random lengths	Thickness	Width	Length	Classic Price per m <sup>2</sup>	Natural Price per m <sup>2</sup>
	28 mm	200 mm	1 – 5 m	64 GBP	46 GBP
			5 – 7 m	90 GBP	63 GBP
	250 mm	1 – 5 m	83 GBP	59 GBP	
			107 GBP	67 GBP	
	300 mm	2 – 5 m	95 GBP	67 GBP	
			113 GBP	81 GBP	
	350 mm	2 – 5 m	107 GBP	81 GBP	
			124 GBP		
35 mm	300 mm	2 – 5 m	100 GBP	70 GBP	
		5 – 7 m	119 GBP	85 GBP	
	350 mm	2 – 5 m	110 GBP	79 GBP	
		5 – 7 m	128 GBP	90 GBP	
	400 mm	2 – 5 m	121 GBP	94,5 GBP	
		5 – 7 m	145 GBP		
	450 mm	2 – 5 m	133 GBP	102,5 GBP	
		5 – 7 m	156 GBP		

# Douglas

Full-length planks are an elegant solution. The clean lines make for a calm expression and can be used to highlight the architecture of a room. Full lengths are a good choice if you want a simple and clean expression. It takes large amounts of raw wood to produce full-length planks, so delivery time may be long.



Full lengths	Thickness	Width	Length*	Classic	Natural
				Price per m <sup>2</sup>	Price per m <sup>2</sup>
	28 mm	200 mm	1 – 5 m	71 GBP	50 GBP
			5 – 7 m	93 GBP	64 GBP
			7 – 10 m	141 GBP	100 GBP
		250 mm	1 – 5 m	92 GBP	65 GBP
			5 – 7 m	113 GBP	81 GBP
			7 – 10 m	141 GBP	100 GBP
		300 mm	1 – 5 m	105 GBP	73 GBP
			5 – 7 m	122 GBP	87 GBP
			7 – 10 m	151 GBP	107 GBP
			10 – 15 m	call	call
		350 mm	1 – 5 m	116 GBP	83 GBP
			5 – 7 m	135 GBP	95 GBP
	7 – 10 m		165 GBP	116 GBP	
	10 – 15 m		call	call	
	35 mm	300 mm	1 – 5 m	105 GBP	73 GBP
			5 – 7 m	124 GBP	87 GBP
			7 – 10 m	151 GBP	107 GBP
			10 – 15 m	call	call
		350 mm	1 – 5 m	116 GBP	83 GBP
			5 – 7 m	135 GBP	95 GBP
7 – 10 m			165 GBP	116 GBP	
10 – 15 m			call	call	
400 mm		1 – 5 m	132 GBP	93 GBP	
		5 – 7 m	150 GBP	106 GBP	
		7 – 10 m	181 GBP	128 GBP	
		10 – 15 m	call	call	
450 mm	1 – 5 m	147 GBP	104 GBP		
	5 – 7 m	165 GBP	117 GBP		
	7 – 10 m	195 GBP	138 GBP		
	10 – 15 m	call	call		

\* Within the given intervals, the planks are combined on demand. You can choose between the following fixed lengths: 1,0 – 1,4 – 1,8 – 2,2 – 2,6 – 3,0 – 3,4 – 3,8 – 4,2 – 4,6 – 5,0 – 5,4 – 5,8 – 6,2 – 6,6 – 7,0 – 7,5 – 8,0 – 8,5 – 9,0 – 9,5 – 10,0 – 10,5 – 11,0 – 11,5 – 12,0 – 12,5 – 13,0 – 13,5 – 14,0 – 14,5 – 15,0 m

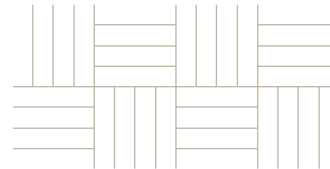
# GrandPattern

GrandPattern is an option where large planks are laid in familiar historical patterns. A modern solution with respect for history, which takes on a contemporary and exclusive appearance due to the proportions.

## Herringbone



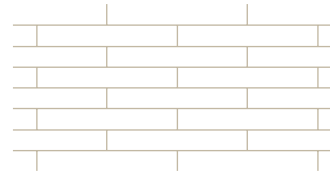
## Mosaic



## Chevron



## Bond



The material consumption of Chevron is higher than the other patterns as the planks must be customised individually.

Douglas	Thickness	Width	Length	Classic Price per m <sup>2</sup>	Natural Price per m <sup>2</sup>
	28 mm	200 mm	60 cm	63 GBP	48 GBP
			80 cm	69 GBP	52 GBP
			100 cm	77 GBP	57 GBP
	250 mm	250 mm	50 cm	69 GBP	52 GBP
			75 cm	77 GBP	58 GBP
			100 cm	83 GBP	63 GBP
	300 mm	300 mm	60 cm	75 GBP	57 GBP
			90 cm	83 GBP	62 GBP
			120 cm	90 GBP	67 GBP
	350 mm	350 mm	70 cm	81 GBP	60 GBP
			105 cm	89 GBP	66 GBP
			140 cm	99 GBP	72 GBP
35 mm	400 mm	80 cm	97 GBP	75 GBP	
		120 cm	109 GBP	82 GBP	
		160 cm	118 GBP	89 GBP	
	450 mm	450 mm	90 cm	116 GBP	89 GBP
			135 cm	130 GBP	98 GBP
			180 cm	141 GBP	106 GBP

# General

## About the planks

The planks are supplied unfinished and have a moisture content of 8-10 %. Dinesen floor planks are CE-labelled in accordance with EN 14342.

## Delivery times

Delivery times for the various dimensions and types vary and may in some cases be considerable. For more information on delivery time, please contact Dinesen on +45 7455 2140.

## Installation

Always consult our instructions or contact our technical department at [info@dinesen.com](mailto:info@dinesen.com) or +45 7455 2140.

## Underfloor heating

All Dinesen planks are suitable for underfloor heating.

## Maintenance

We recommend Dinesen products for finishing and maintenance. Our soaps are made especially for Dinesen floors and contain components that secure correct maintenance of the floors.

To preserve the beauty of your Dinesen floor, you need to use Dinesen's maintenance products. We cannot assure the durability and condition of the surface if other products are used.

## Webshop

Our webshop with maintenance products and instruction videos can be found at [dinesen.com](http://dinesen.com).

## Prices

The present price list was released on 1 January 2019. All the listed prices are stated in GBP per m<sup>2</sup>. All the listed prices are exclusive of VAT and delivery.

We do not accept any liability for printing errors.